

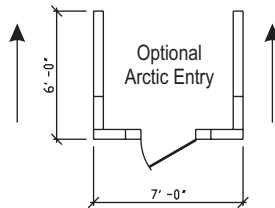
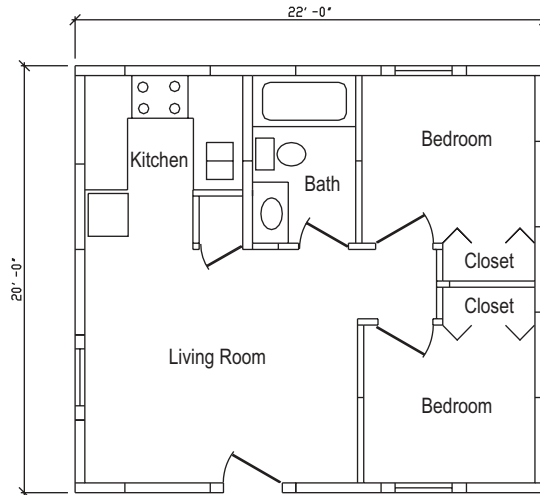
MODEL M-440, 2 BEDROOM

Imperial Manufacturing modular panel sections are available in several construction types. Insulation can be either energy efficient urethane foam or economical fiberglass. Standard perimeter framing for urethane and fiberglass panel sections is wood. However, for extreme climates, high density urethane framing can be used to provide greater insulation. To determine what option is best for you, and for pricing information, contact your R-Plus representative.

R-PLUS

SUPER INSULATED HOMES

A Division of Imperial Manufacturing, Inc.
 2271 NE 194th - Portland, Oregon 97230
 Wats: 1.800.238.4093 - Fax: 503.665.2929



440 sq. ft.

EXTERIOR SHELL PACKAGE (includes the following items as per plan drawings)

- ⊗ Insulated floor, wall and roof panels, including roof support beam(s)
- ⊗ Tie-down to fasten floor panels to the foundation
- ⊗ Windows
- ⊗ Exterior doors
- ⊗ Metal roofing
- ⊗ Vinyl siding or T-111 siding (T-111 includes paint or stain)

OPTIONAL ARCTIC ENTRY SHELL PACKAGE (standard size is 8' x 13')

Includes same items as exterior shell package above.

OPTIONAL INTERIOR MODULAR NON-INSULATED PANELS

Wall and ceiling sections for the bedroom, bath and kitchen. Sections are framed with 2x4 and 2x6 wood utilizing our cam-lock system for easy, fast installation. Panel sections have OSB on one side for strength.

