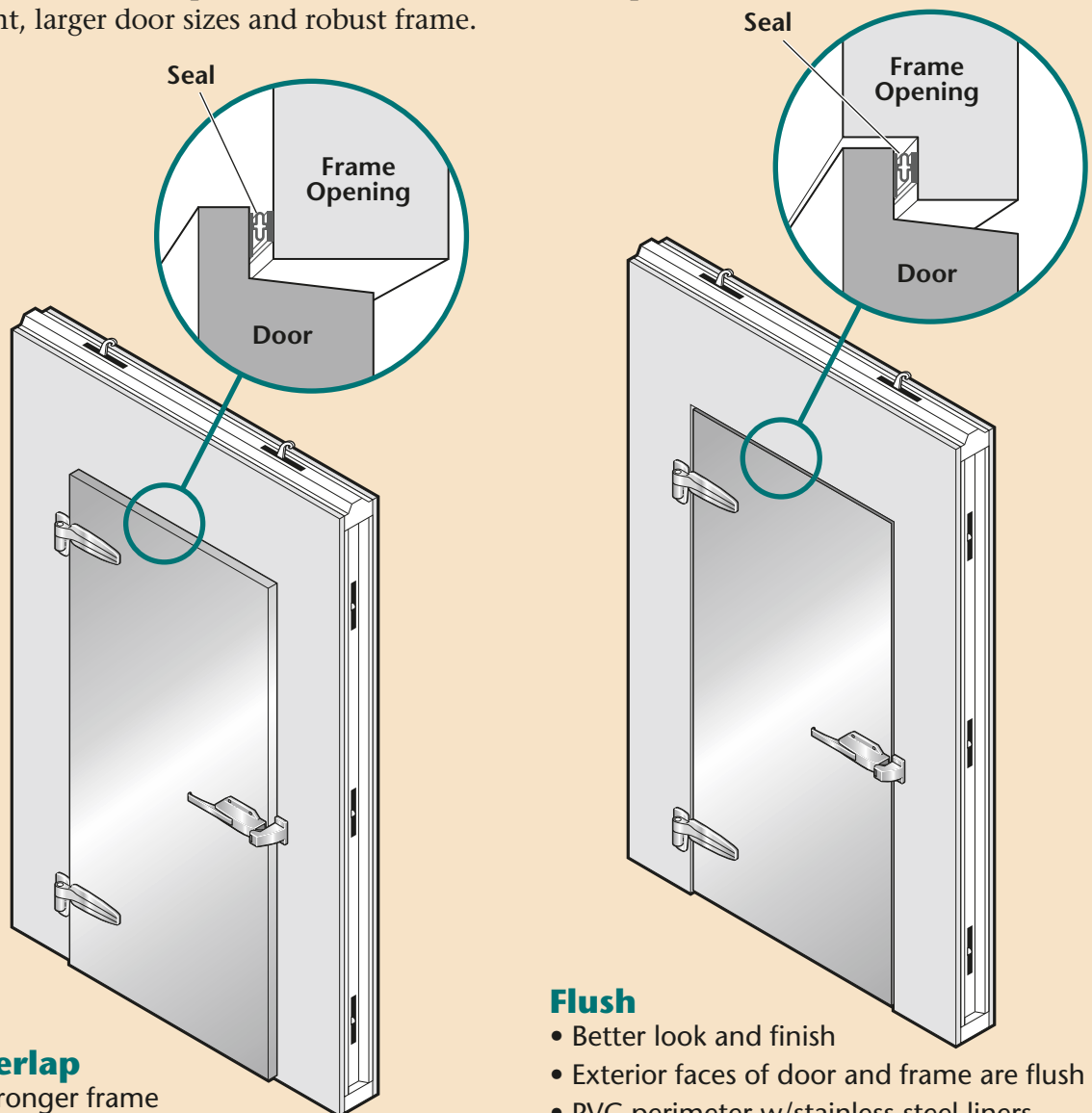


R+PLUS Swing Doors Overlap vs Flush

Overlap and Flush Fit Doors – What is the difference?

The difference between Overlap and Flush Doors lies in how the door plug closes in relation to the door frame. With Flush Doors the exterior face of the door is flush with the frame surface when closed. Overlap Doors protrude about 1½ inches from the frame surface when the door is closed.

The pleasing appearance of Flush Doors make a good fit for food service or clean room applications. On the other hand, Overlap Doors are the number one choice for warehouses and supermarkets because of their lower price point, larger door sizes and robust frame.



Overlap

- Stronger frame
- Larger door sizes available
- Heavy duty liners available to further protect opening
- Adjustable hinges optional
- Lower price point

Flush

- Better look and finish
- Exterior faces of door and frame are flush
- PVC perimeter w/stainless steel liners
- Adjustable hinges standard
- Self-closing hardware standard



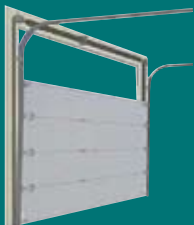
Swinging Doors



Bi-Parting Sliding Doors



Single Sliding Doors



Standard or High Lift Doors



Full Lift Doors